



IT IS A VIOLATION OF LAW FOR ANY PERSON, UNLESS THEY ARE ACTING UNDER THE DIRECTION OF A LICENSED PROFESSIONAL ENGINEER, ARCHITECT, LANDSCAPE ARCHITECT OR LAND SURVEYOR TO ALTER AN ITEM IN ANY WAY. IF AN ITEM BEARING THE STAMP OF A LICENSED PROFESSIONAL IS ALTERED, THE ALTERING ENGINEER, ARCHITECT, LANDSCAPE ARCHITECT OR LAND SURVEYOR SHALL STAMP THE DOCUMENT AND INCLUDE THE NOTATION "ALTERED BY" FOLLOWED BY THEIR SIGNATURE, THE DATE OF SUCH ALTERATION, AND A BRIEF DESCRIPTION OF THE ALTERATION.

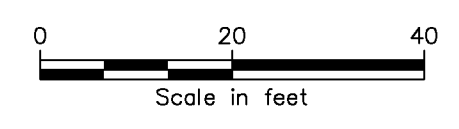
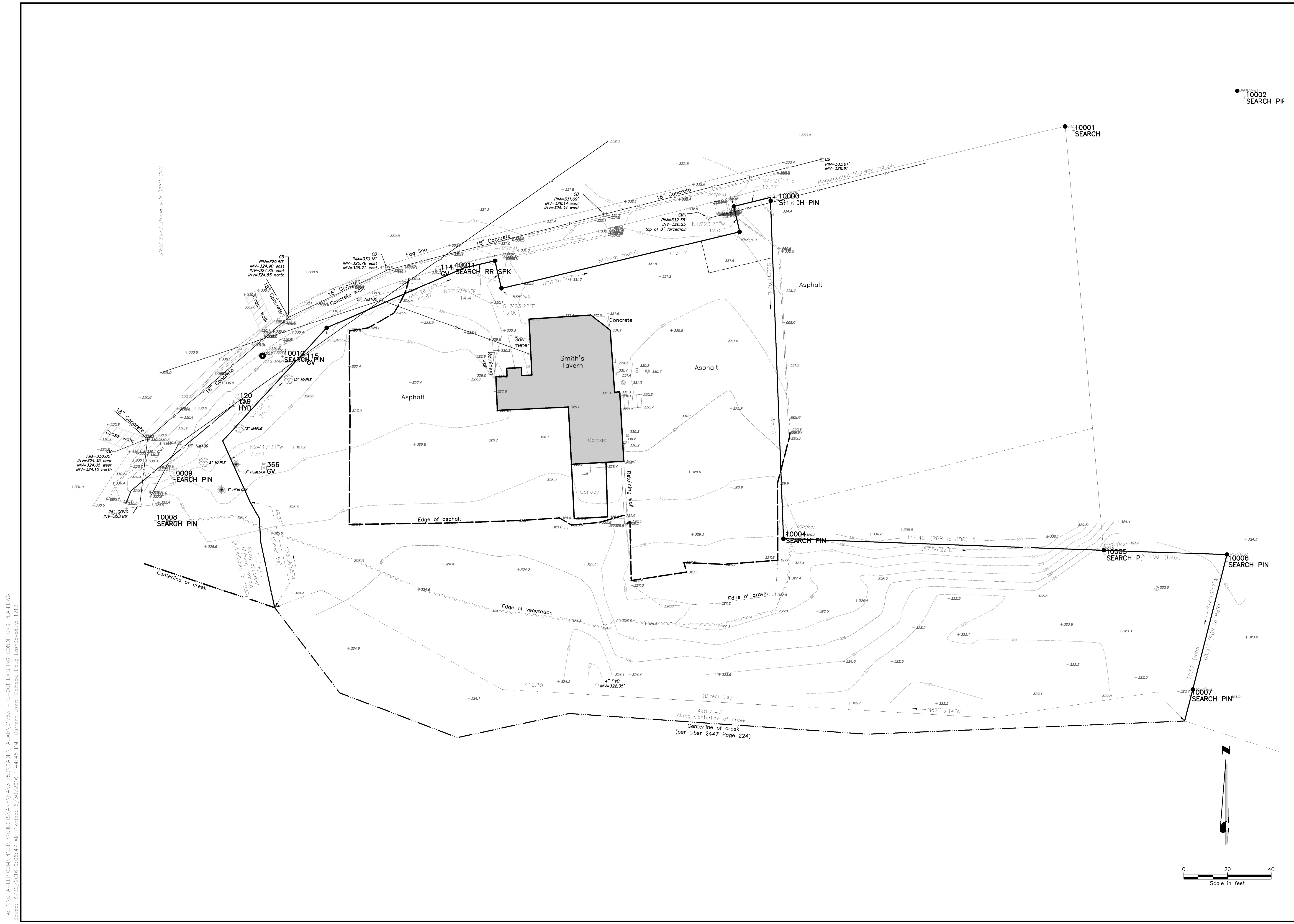
STEWART'S
112 MAPLE AVENUE
VOORHEESVILLE, N.Y.

No.	Submittal / Revision	App'd	By	Date

EXISTING CONDITIONS PLAN

Designed By: APS	Drawn By: DJO	Checked By: JPR
Issue Date: 6/30/16	Project No.: 31753	Scale: AS SHOWN

Drawing No.:
C-001



File: \\CHA-LIP.COM\PROJ\PROJECTS\NY\164\31753\CADD\ACAD\31753 - C-001 EXISTING CONDITIONS PLANDWG
Saved: 6/30/2016 9:06:47 AM Plotted: 6/30/2016 1:44:48 PM Current User: Deptack Doug LastSavedBy: 1213